



SDKP Workstation for Pipettes Calibration, SDKP DUAL Workstation for Pipettes Calibration

More information on the website
radwag.com/en/info,w1,CB2



SDKP Workstation for Pipettes Calibration



SDKP DUAL Workstation for Pipettes Calibration

The drawings, photos and graphics used are for illustrative purposes only.

Datasheet

	SDKP Workstation for Pipettes Calibration WL-101-0181	SDKP DUAL Workstation for Pipettes Calibration WL-101-0173
Physical parameters		
Delivery components	table for calibration, anti-vibration table, probe for temperature, humidity and pressure measurement, probe for water temperature measurement, sink for used water, armrests, LCD monitor, PC with pre-installed software PIPETTES RADWAG, power supply, keyboard and mouse, container for used water	table for calibration, anti-vibration table x2, probe for temperature, humidity and pressure measurement, probe for water temperature measurement, sink for used water, armrests, LCD monitor, PC with pre-installed software PIPETTES RADWAG, power supply, keyboard and mouse, container for used water
Packaging dimensions W x D x H	820×1160×890 mm	—
Chamber packaging size		820×1410×1000 mm
Gross weight	—	250 kg
Length	1100 mm	1350 mm
Width	750 mm	750 mm
Height	1100 mm	1100 mm

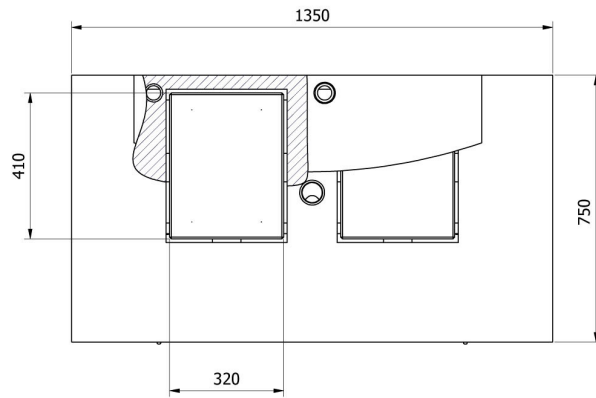
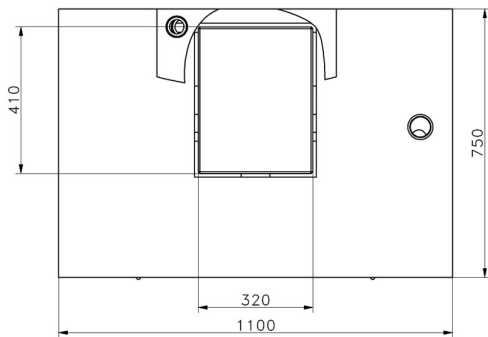
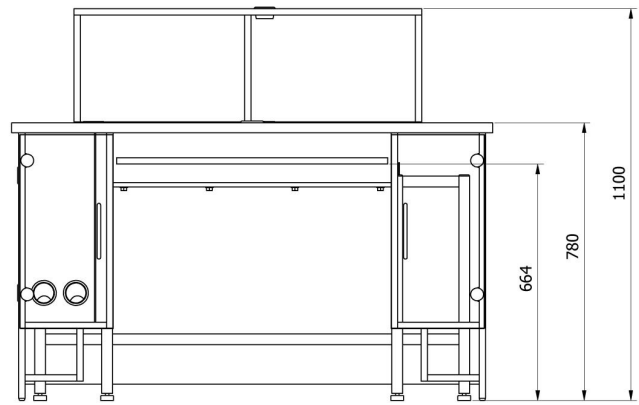
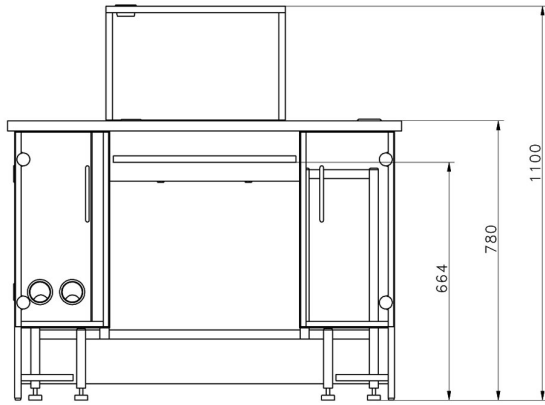
Compatible with (Additional Fee)

XA 5Y.M.A.P Microbalance for pipettes calibration
MYA 5Y.P Microbalance for pipettes calibration
AS X7 Analytical Balance
Pipette Tips

AS 5Y Analytical Balance
AS R2 PLUS Analytical Balance
AS R1 PLUS Analytical Balance
THBR 2.0 System - Ambient Conditions Monitoring

Device dimensions W x D x H

SDKP Workstation for Pipettes Calibration, SDKP DUAL Workstation for Pipettes Calibration



—SDKP

—SDKP DUAL